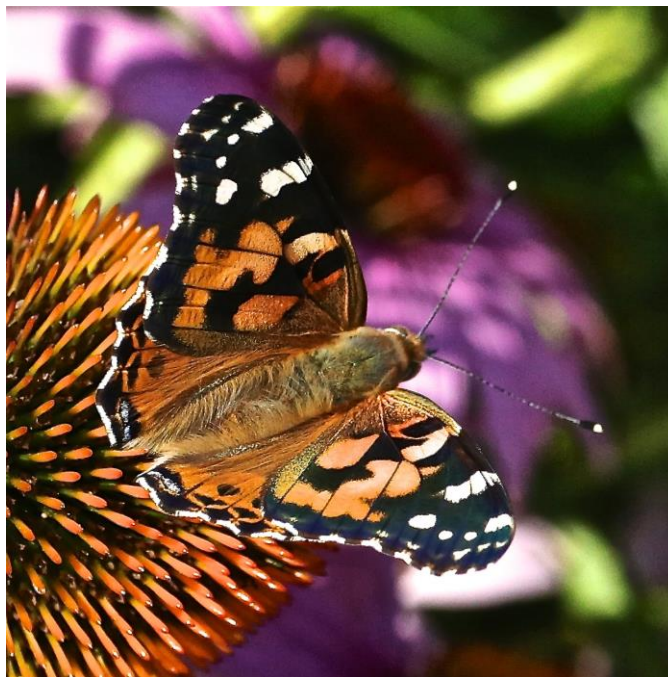


SEPTEMBER 15-30, 2022, NATURAL HISTORY NOTES
By Dick Harlow

SIMILAR BUT DIFFERENT



PICTURE #1, © Richard Harlow



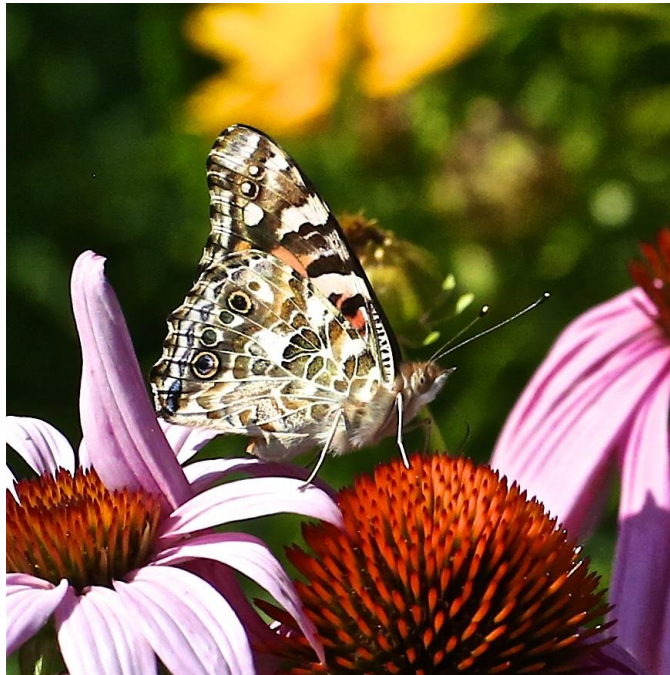
PICTURE #2, © Richard Harlow

Pictures #1 and #2 are two different species of butterflies even though they look very similar. They are **NOT** abundant here at EastView. Both are types of Lady butterflies, one of which has not been seen or at least had its picture taken since EastView was built.

SEPTEMBER 15-30, 2022, NATURAL HISTORY NOTES
By Dick Harlow



PICTURE #3, © Richard Harlow



PICTURE #4, © Richard Harlow

There is a definite characteristic that separates **picture #1** from **picture #2**. Can you see the difference? Hint: Looking at these two images can you see any color difference?

Pictures #1, #3 #5 and #6 are the same species.

SEPTEMBER 15-30, 2022, NATURAL HISTORY NOTES
By Dick Harlow



PICTURE #5, © Richard Harlow



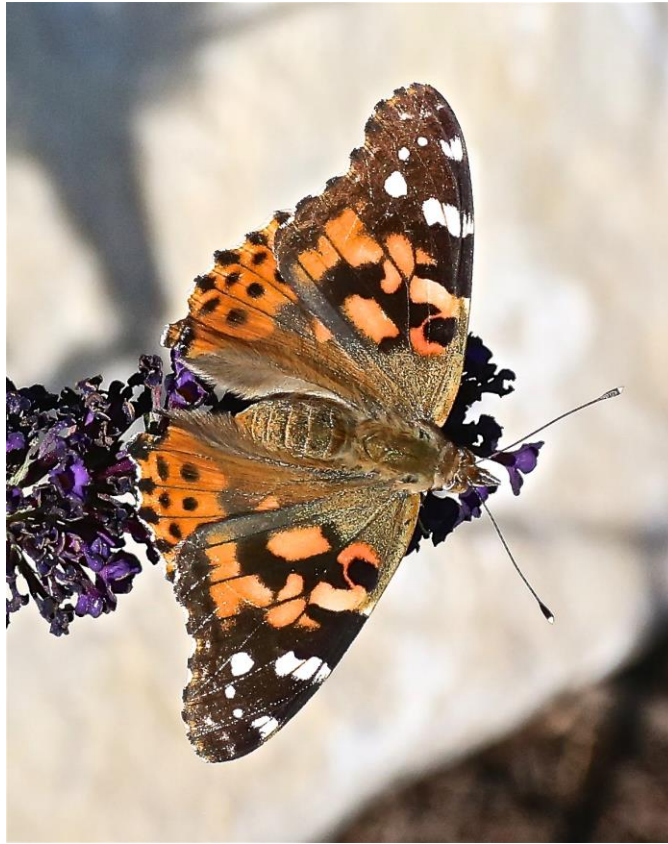
PICTURE #6, © Richard Harlow

The white dot in the orange panel of the forewing and the same white dot in the now reddish panel in the underwing is characteristic of an **American Lady**,

Pictures #2 and #4 are the same species, no fore or hindwing single white dot. Also notice that **picture #6** has only two large brown dots on the underside of the hind wing.

SEPTEMBER 15-30, 2022, NATURAL HISTORY NOTES

By Dick Harlow



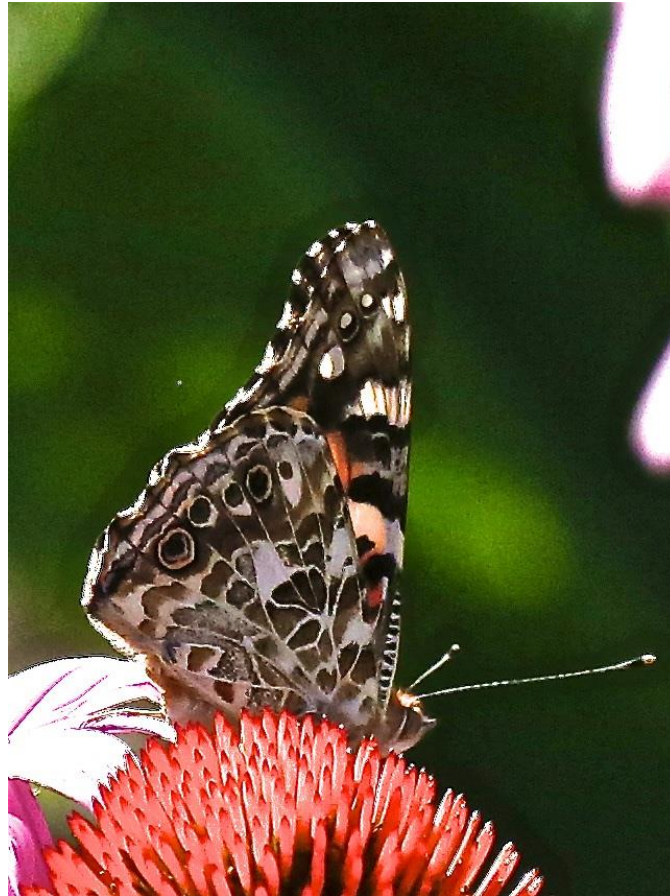
PICTURE #7, © Richard Harlow

Picture #7 has no white forewing dot emersed in an orange panel of the forewing. Notice that in **Picture #8** there are a series of five brown dots on the underwing not just two large dots.

These two factors, the white dot on both the front of the forewing and under the forewing along with only two large brown dots under the hindwing are the significant differences between the **American Lady** that has this characteristic and the **Painted Lady** butterfly that has no dot and a series of dots on the underwing.

SEPTEMBER 15-30, 2022, NATURAL HISTORY NOTES

By Dick Harlow



PICTURE #8, © Richard Harlow

The **Painted Lady**, *Vanessa cardui*, **Pictures, #2, 4, 7, 8** was observed and photographed here at EastView in 2014 and 2019, but not been seen since 2019.

However, **American Lady**, *Vanessa virginiensis*, **pictures #1, #3, #5 and #6** has not been seen at EastView since we began living here, in the early summer of 2013. These pictures were taken at our home in Milton, Vt. The question is, why have we not seen this species?

I feel this is concerning and I plan to investigate to see if there is a logical reason why this particular species that likes open areas has not been observed here at EastView.

SEPTEMBER 15-30, 2022, NATURAL HISTORY NOTES

By Dick Harlow

OBSERVATIONS

MAMMALS

Gray Fox – by South Pond
Cottontail Rabbit
Meadow Vole in shed

BUTTERFLIES

Cabbage White
Yellow Sulphur

All Measurements taken at solar noon (1230 EST).

PRECIPITATION

Average September Precipitation for Vermont = 3.62 inches.

TOTAL September Rainfall: 1st Wk.= 14.4 mm; 2nd Wk.= 66.8 mm; 3rd Wk.= 19.2 mm; 4th Wk.= 35.2 mm for a total of 122.0 mm for the week which equals 5.3 inches. September Average is 3.62 inches, our monthly total exceeds the average and puts the surplus of 1.68 inches against the deficit of 5.29 inches for the year. Total deficit to date by the end of September is 3.61 inches.

The month of September had 18 overcast days and 14 days where there was some sort of precipitation.